

**Talis E**  
**Single lever bath mixer for exposed installation**  
 Surfaces: **Chrome** Article Number: **71740000**



## Description

### product features

- 2 functions
- projection 194 mm
- connection type: s-shaped connections
- centre distance: 150 ± 12 mm
- spray type mixer: normal spray
- maximum flow rate at 3 bar: 19,2 l/min
- flow rate for bath spout at 3 bar: 19,2 l/min
- flow rate of hand shower at 3 bar: 16,8 l/min
- ceramic cartridge
- temperature limitation adjustable
- diverter with automatic resetting
- with silencer
- suitable for continuous flow water heaters
- connection dimension: DN15

## Technology



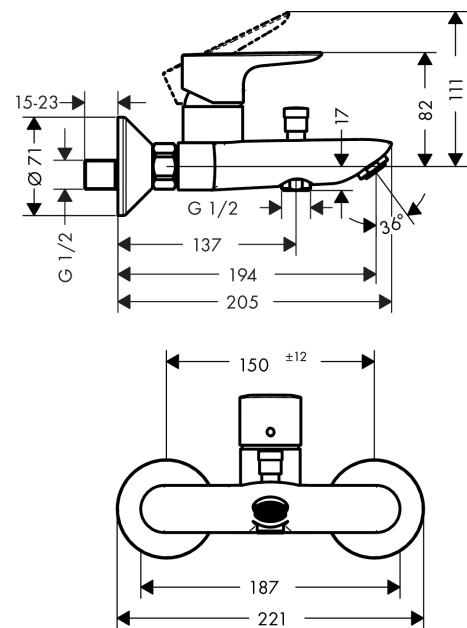
## Design awards



## Product image



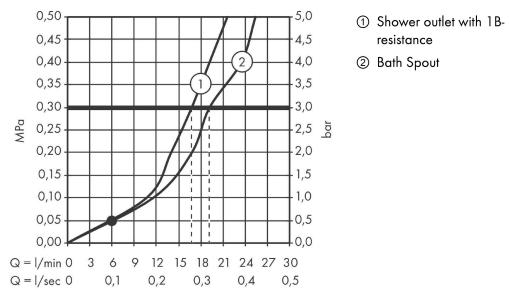
## Scale drawing



**Talis E**  
**Single lever bath mixer for exposed installation**  
 Surfaces: **Chrome**    Article Number: **71740000**



### Flowchart

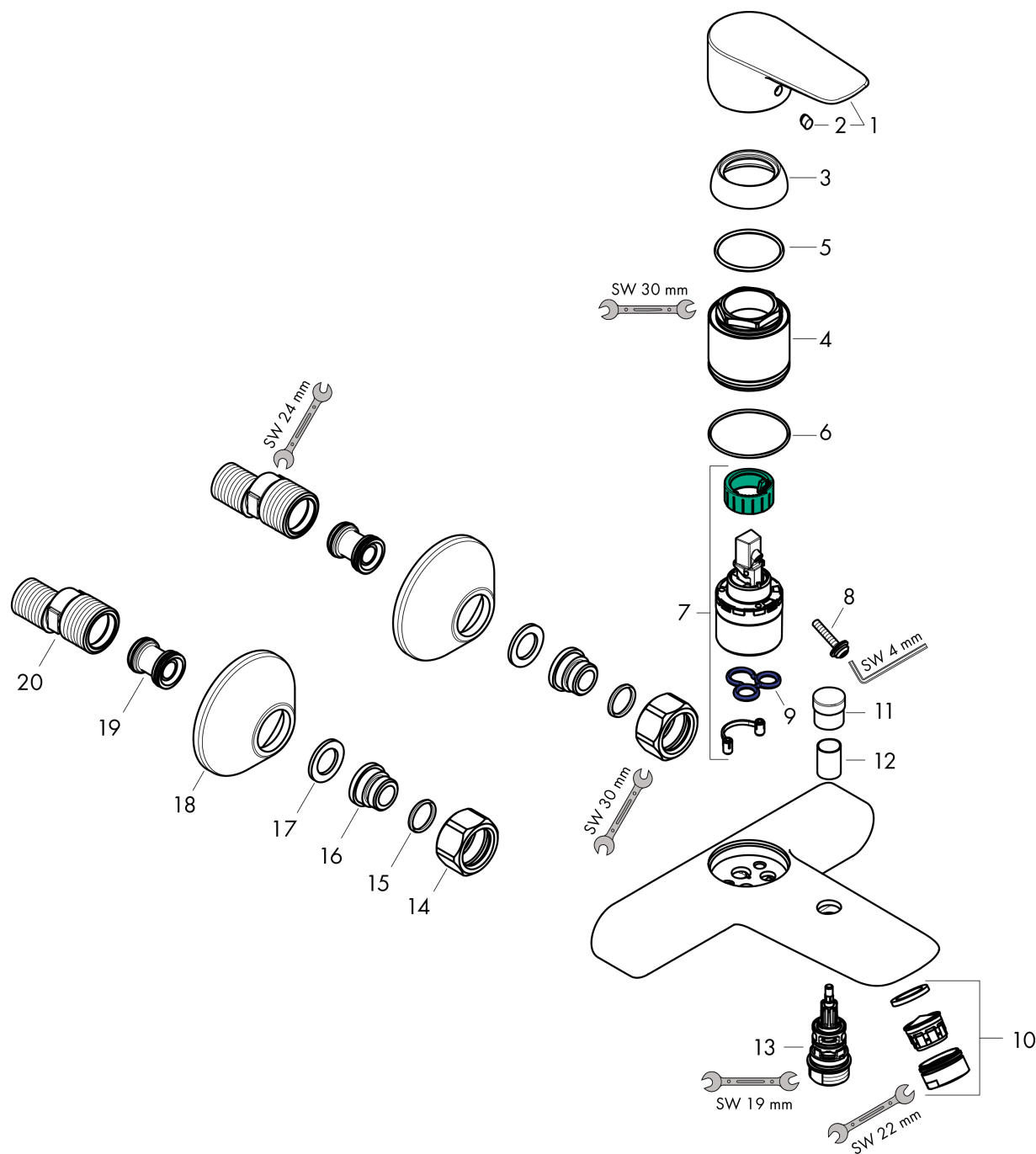


**Talis E**  
**Single lever bath mixer for exposed installation**  
 Surfaces: **Chrome**    Article Number: **71740000**



## Exploded Drawing

Year of production: >10/15



**Talis E**  
**Single lever bath mixer for exposed installation**  
 Surfaces: **Chrome** Article Number: **71740000**



### Spare part list

Year of production: >10/15

Pos.	Description	Article Number	Price	PU
1	handle	92666000	-	1
2	screw cover	96338000	-	1
3	flange	97406000	-	1
4	nut	97977000	-	1
5	O-Ring 32x2	98193000	-	1
6	O-ring 33x1,5	98164000	-	1
7	cartridge, assy	92730000	-	1
8	locking screw for handle	95140000	-	1
9	seal	95008000	-	1
10	aerator M24x1 (30 l/min)	96512000	-	1
11	diverter knob	97981000	-	1
12	sleeve	97979000	-	1
13	selector	97978000	-	1
14	set of nuts	96157000	-	1
15	O-ring 15x2	98163000	-	1
16	connecting thread	97220000	-	1
17	filter packing	96922000	-	1
18	escutcheon Ø 70 mm	94135000	-	1
19	noise reduction	96429000	-	1
20	set of S-unions (±12 mm)	94140000	-	1
a	set of S-unions (±32 mm)	98592000	-	1